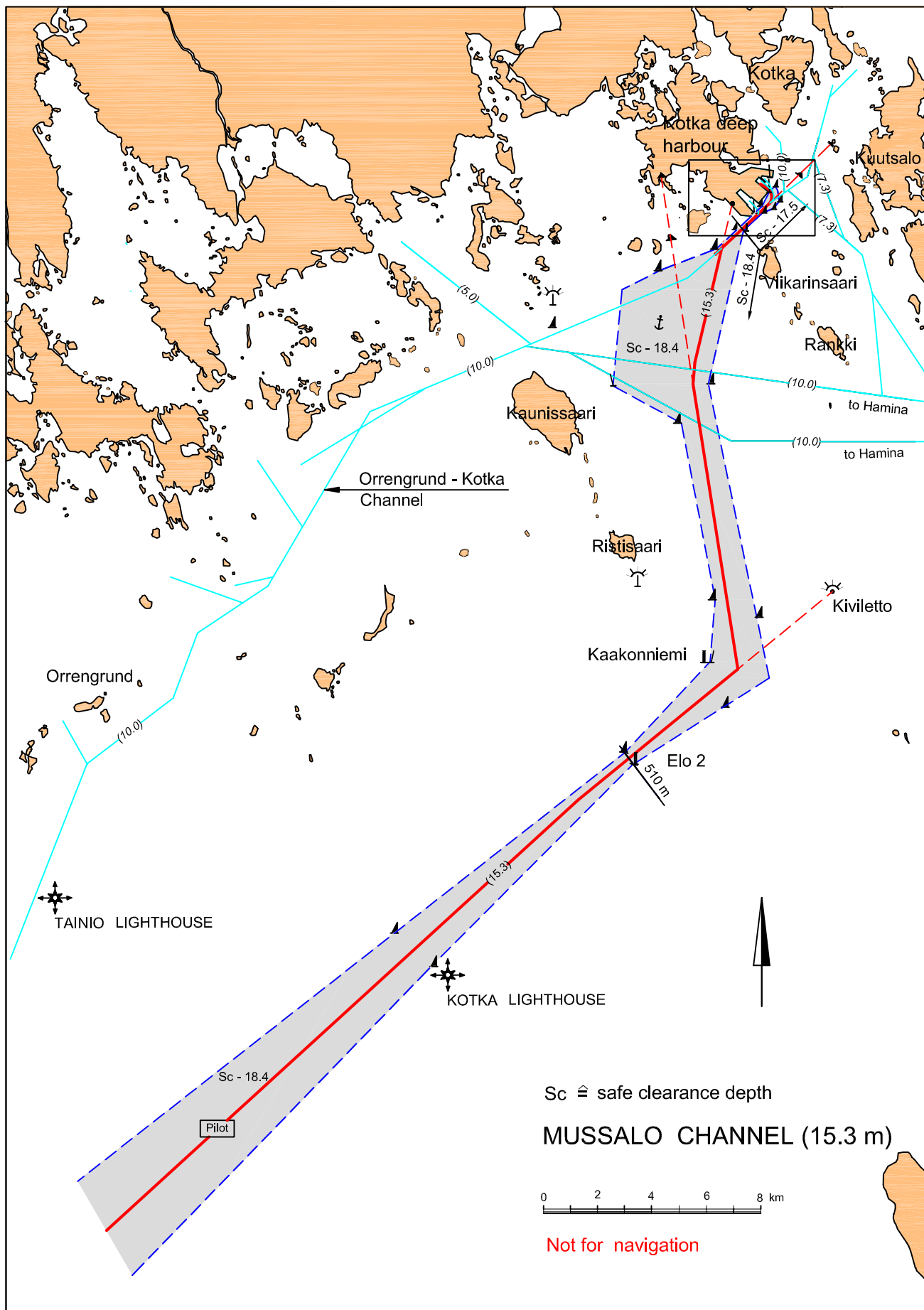




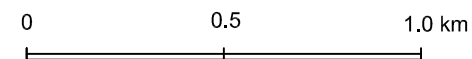
27.6.2006

FAIRWAY DATA		
<p>Alignment and buoyage: The channel starts SW of Kotka Lighthouse and runs in a NE direction. E of the edge mark Kaakkoniemi it turns northwards towards the Deep Harbour of Kotka. Length 51 km/28 nm. 5 navigation lines, marked by boards and sector lights. Cardinal marks in the channel, lateral marks in the harbour. Lit.</p> <p>Dimensions: Design vessel: bulk carrier 125 000 DWT, l = 300 m, b = 48 m, t = 15.3 m. Authorised draught 15.3 m, safe clearance depths (MW 90) -18.4 m, along the navigation line in the harbour -17.5 m. Minimum width 200 m.</p> <p>Anchorage areas etc.: Anchorage NE of Kaunissaari, close to crossroads. Safe clearance depth -18.4 m.</p>		
NAVIGABILITY		
<p>Navigational conditions: The approach as far as the island Viikarinsaari consists of open sea, unsheltered against E-S-SW winds. Navigation may be hampered by strong winds and sea state. The channel is at its narrowest at the edge mark Elo 2, where it is only 510 m wide. Along the navigation line in the harbour the width is 200 m.</p> <p>RECOMMENDATIONS (channel)</p> <p>Speed: Ships sailing at maximum draught should take the squat effect into account; design speed 16.5 knots (Sc -18.4) in the approach, 13 knots (Sc -17.5 m) in the harbour.</p>		
TRAFFIC SERVICE		
<p>Pilotage: Pilot order, tel. +358 204 48 5604. Pilot boarding position 60°07.49', 26°29.65'. Pilotage distance 25 nm.</p> <p>VTS: Kotka VTS, VHF Channel 67.</p> <p>Tugs: Provided by Alfons Håkans Ltd. Ordered by pilot, if required.</p>		
PORT		
<p>Quays: <i>A Quay:</i> length 609 m, safe clearance depth -15.0..-17.5 m; <i>B Quay:</i> length 500 m, safe clearance depth -11.7 m; <i>C Quay:</i> length 936 m, safe clearance depth -11.7 m; <i>Liquid Bulk Terminal, berth N 1:</i> length 69 m, safe clearance depth -15.0 m; <i>Liquid Bulk Terminal, berth N 2:</i> length 60 m, safe clearance depth -11.5 m.</p> <p>Cargo handling: A Quay – four cranes (40 t), B Quay – two cranes (40 t) and a mobile crane, C Quay – four cranes (50 t).</p> <p>Harbour basin: Speed of vessel to be regulated to ensure that no harm or damage is caused.</p>		
CONTACTS		
VTS: Kotka VTS	tel. +358 204 48 5604	fax +358 204 48 5600
Port: Port of Kotka	tel. +358 5 2344 280	fax +358 5 2181 375



Sc $\hat{=}$ safe clearance depth

MUSSALO HARBOUR



Not for navigation

